

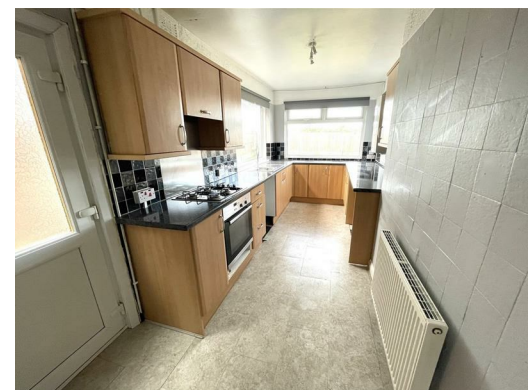


**5 Mayfair Avenue, Bowring Park, Liverpool, Merseyside, L14 0JY**

**Asking price £180,000**

Alpha-move are delighted to offer this three bedroom extended semi detached on Mayfair Ave L14, close to schools, shops, all local amenities and major transport links for road and rail. The property briefly comprises of hallway, through reception and galley kitchen, with three bedrooms and family bathroom upstairs. Externally there is off street parking to the front, and a large garden and patio at the rear that benefits from not being overlooked. This property is situated on a generous plot and offers plenty of scope for extending (subject to appropriate consent), making it an ideal property for young and growing families. Viewing is strongly recommended to fully appreciate this opportunity.

Tenure: Freehold  
Council tax band - C - Knowsley Council



# 5 Mayfair Avenue, Bowring Park, Liverpool, Merseyside, L14 0JY

## Entrance Hall

14'4" x 6'2" (4.39 x 1.90)

Double radiator, upvc door to front aspect.

## Through Lounge

26'1" x 11'3" (7.96 x 3.45)

Two double radiators, upvc window to front aspect, upvc french doors to rear aspect.

## Kitchen

18'5" x 7'11" (5.62 x 2.42)

Kitchen comprises of various wall and base units, oven, hob, extractor fan, upvc window to rear and side aspect, upvc door to side aspect.

## Stairs And Landing

7'11" x 6'0" (2.43 x 1.84)

Upvc window to side aspect.

## Bedroom One

11'1" x 13'11" (3.4 x 4.25)

Double radiator, upvc window to front aspect.

## Bedroom Two

11'8" x 11'2" (3.56 x 3.41)

Single radiator, upvc window to rear aspect.

## Bedroom Three

8'3" x 6'8" (2.52 x 2.05)

Single radiator, upvc window to front aspect.

## Bathroom

6'4" x 6'3" (1.95 x 1.92)

Bath with shower over, low level wc, wash hand basin, upvc window to side aspect.

